



Butler County Community College

Butler Campus Master Plan

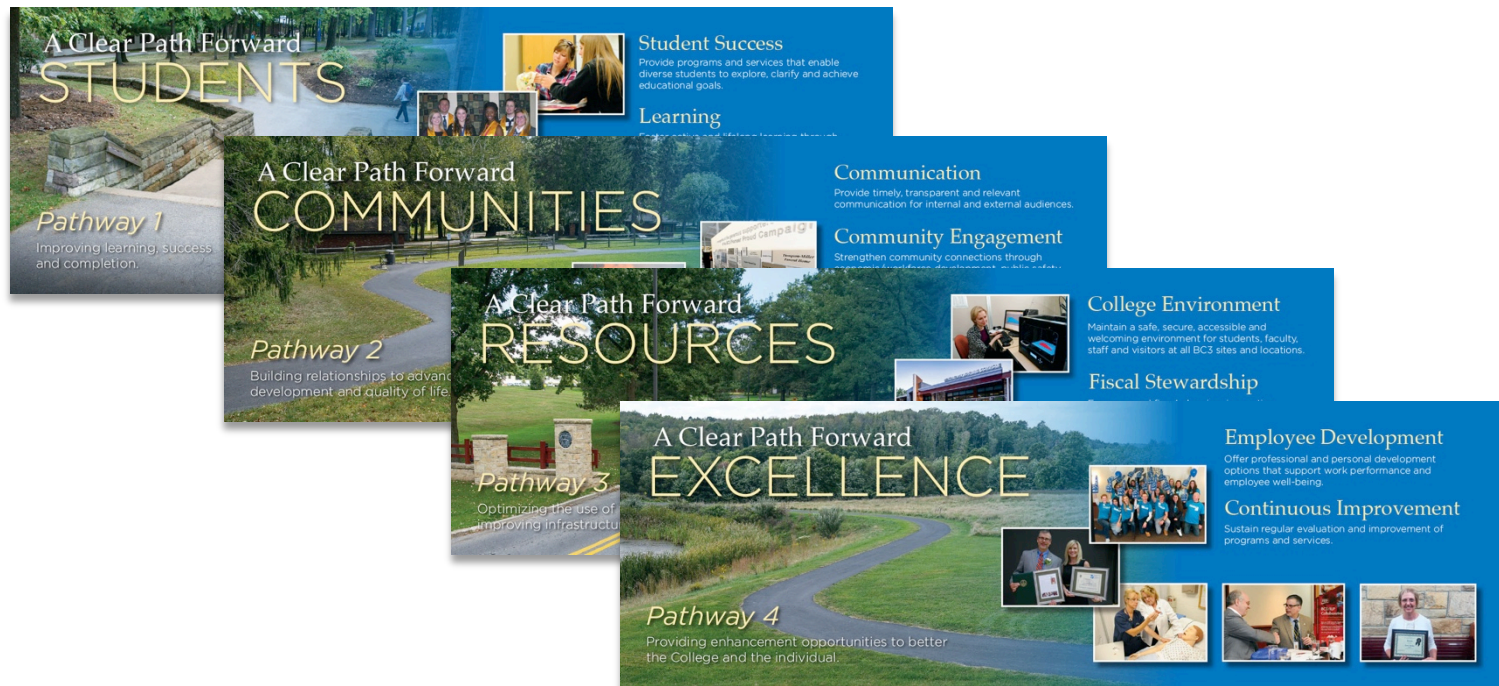
Spring 2017



A Clear Path Forward

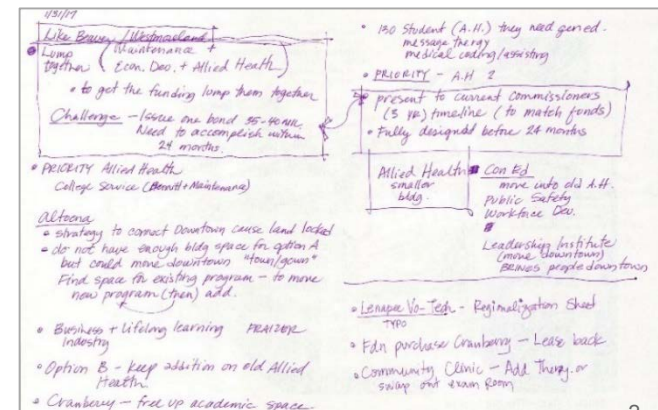
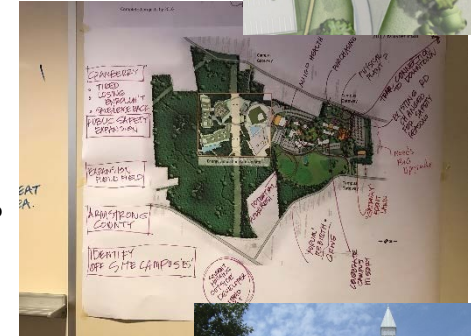
The possibilities are endless for a Plan that focuses on our students, communities, resources and excellence. I am confident this plan accomplishes “A Clear Path Forward” for our No. 1 ranked Community College. I urge every BC3 stakeholder - in particular faculty, staff, and students - to collaborate in achieving the College’s pathways moving forward.

Dr. Nicholas Neupauer



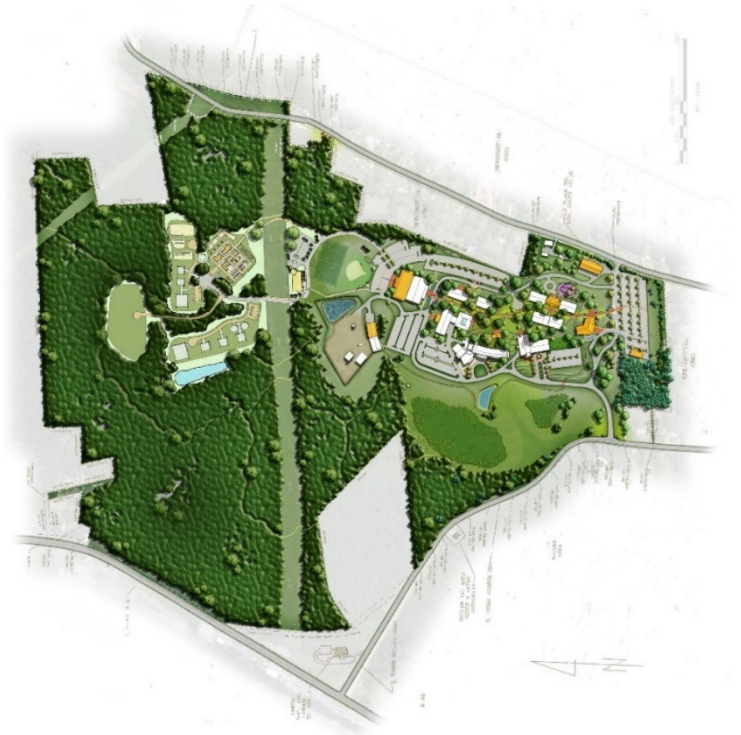
Preliminary BC3 Masterplan elements

- How has the learning commons effected thoughts on classes, programs, and the future of the campus?
- Buildings vs. program use: - good, bad, mismatched? – are some classes/programs better suited in other locations??
- Bennitt Property – How can it be best utilized?
- What is the future for Allied Health?
- What is the future for Con-Ed/Workforce Development?
- What is the future for the Con-Ed building?
- Possible Health Clinic? – where should it be located? How can it fit into classes/programs on campus?
- The future of energy and utility training– What is the big picture???
- Is the baseball field utilized? – is it better to have a multipurpose field in that location??
- How can we further ourselves with being the “community's college”?
- How do we influence student housing development, and how does student housing effect BC3?
- What are appropriate locations for administrative offices/functions?
- What influence has “the reset” had on campus operations/responsibilities???



Master Plan Approach

- Review past Master Plans, see what we have accomplished and what projects have not completed - evaluate if those should be brought forward.
- Look to our Mission, Vision, Goals, and the Pathways from our new Strategic Plan to see how those might influence future projects and planning.
- Consider what plans for programs and departments in our area are need consideration for their future.
- Brainstorm and 'think outside the box' on how we might more efficiently utilize our existing campus and facilities.
- Do a little dreaming on ideas and plans that we should at least identify on our plan although not quite ready to move forward with.
- Use the success of the Heaton Family Learning Commons as a model for the future



Celebrating History and Community:

- Fundraising / P.R. Opportunities / Student Recruiting
- Celebrate campus history
- Armco/AK (Steel)
- Pullman R/R
- Jeep
- Showcase local employers that hire from BC3 programs IIVI, Penn United, etc.

Community Connections and Downtown opportunities:

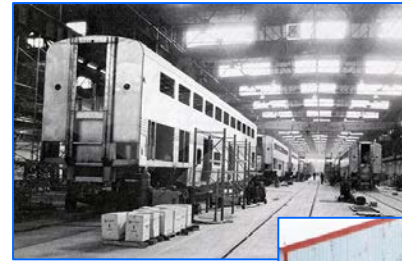
- Downtown promotion banners/branding and other identifiers
- Connection to downtown
- Pull people from the Walking Trail onto campus
- Reinforce connections to the community (“the Community’s College”)
- Remember that “Butler is a college town”
- Potential Business Incubation space in the Downtown
- Potential Leadership Institute in the Downtown

Program Enhancements

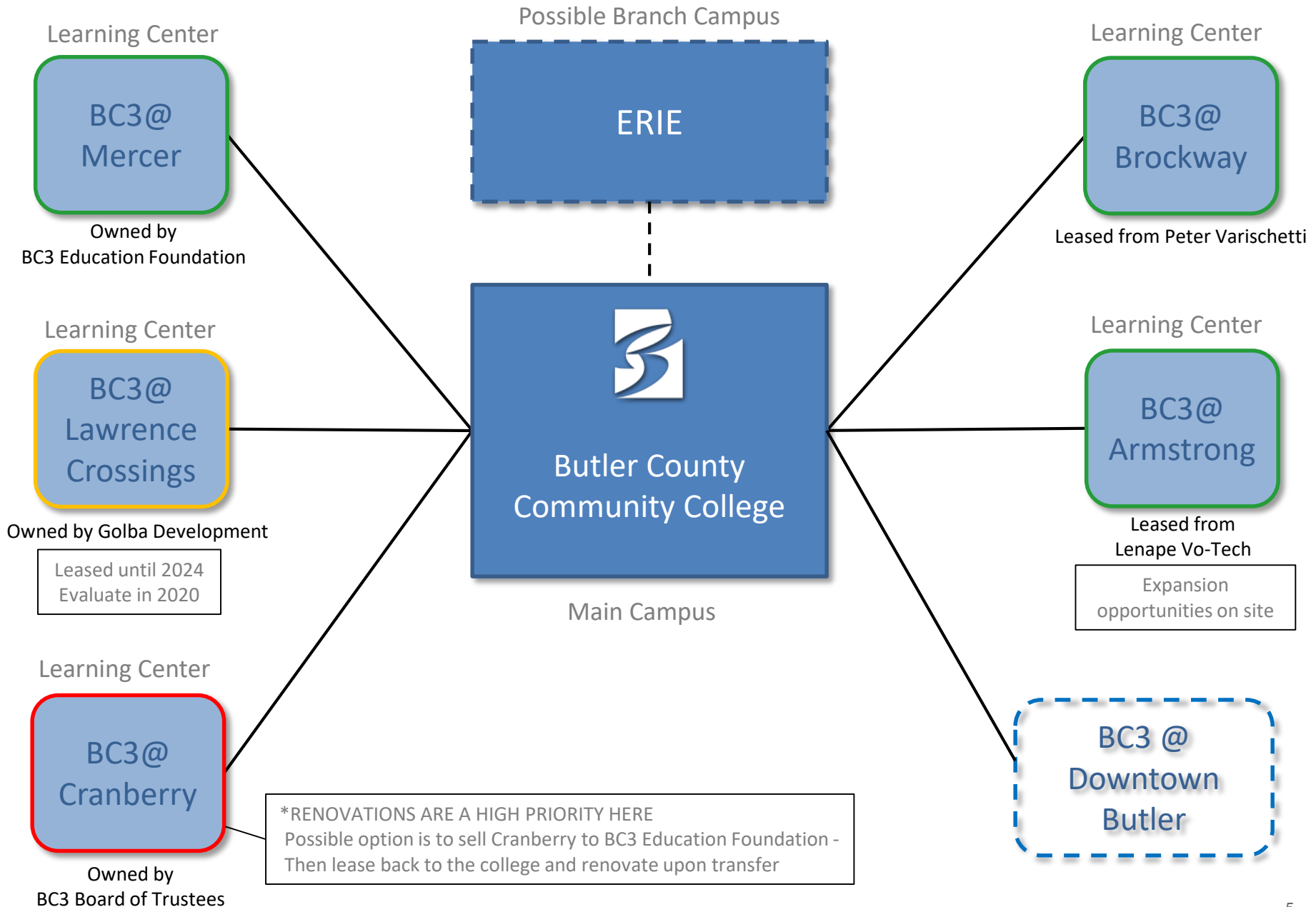
- Life Long Learning
- Workforce Development Expansion
- Incubator Spaces
- Allied Health/Nursing


Reinforce Brand

- Remain current and relevant
- Draw people in and make people aware of BC3
- Personalized student welcome/acknowledgement videos
- Advertise the Heaton Learning Commons to walkers on the trail
- Create an interactive campus



Butler County Community College Regionalization Sheet







CITY OF BUTLER



Connection to the Downtown

Possible sub-division opportunity

Sim City

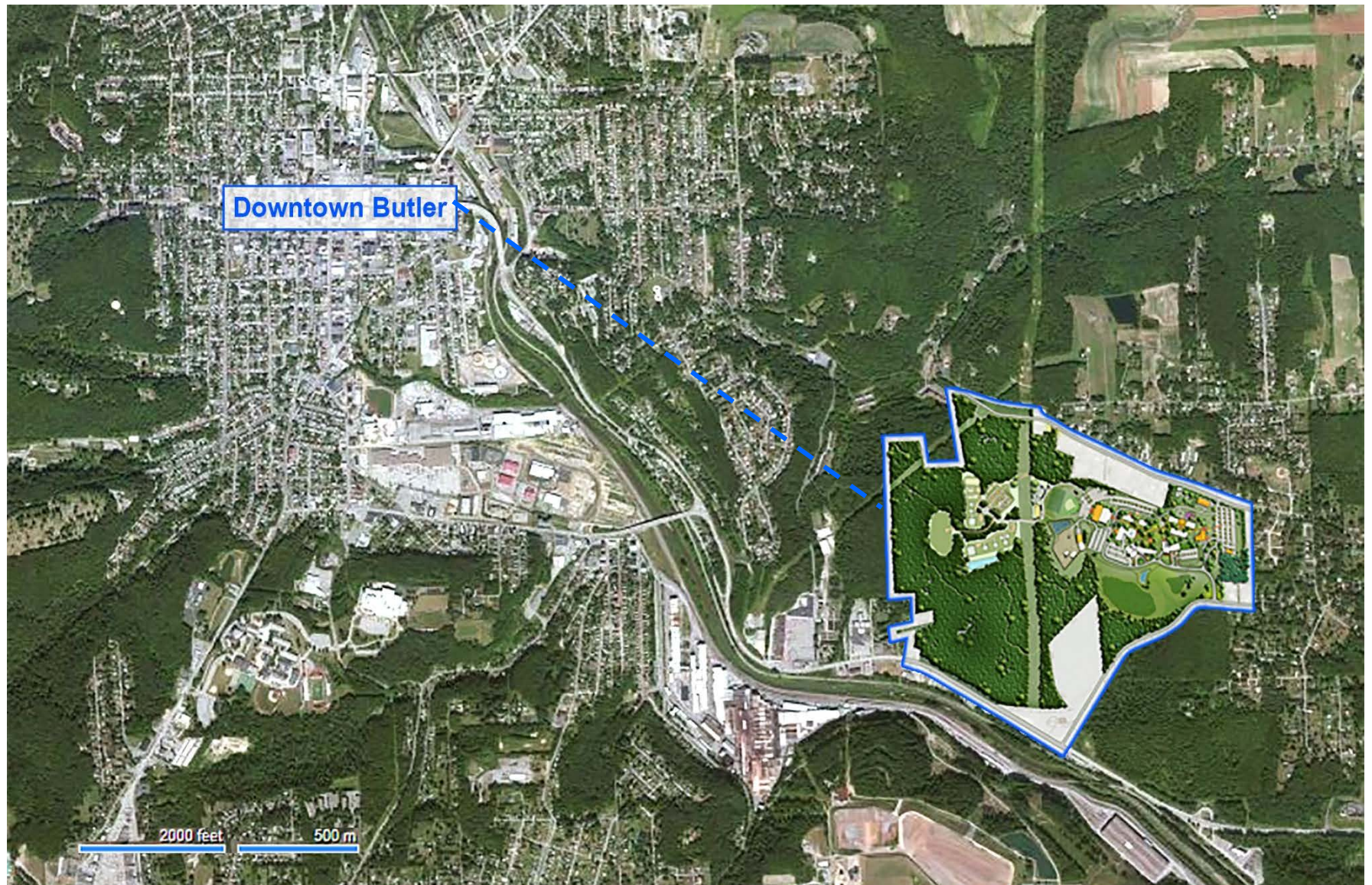
BC3 PROPERTY

Imhoff Trail

Potential Housing

Potential Housing

Possible purchase and utilization of the Fraser building





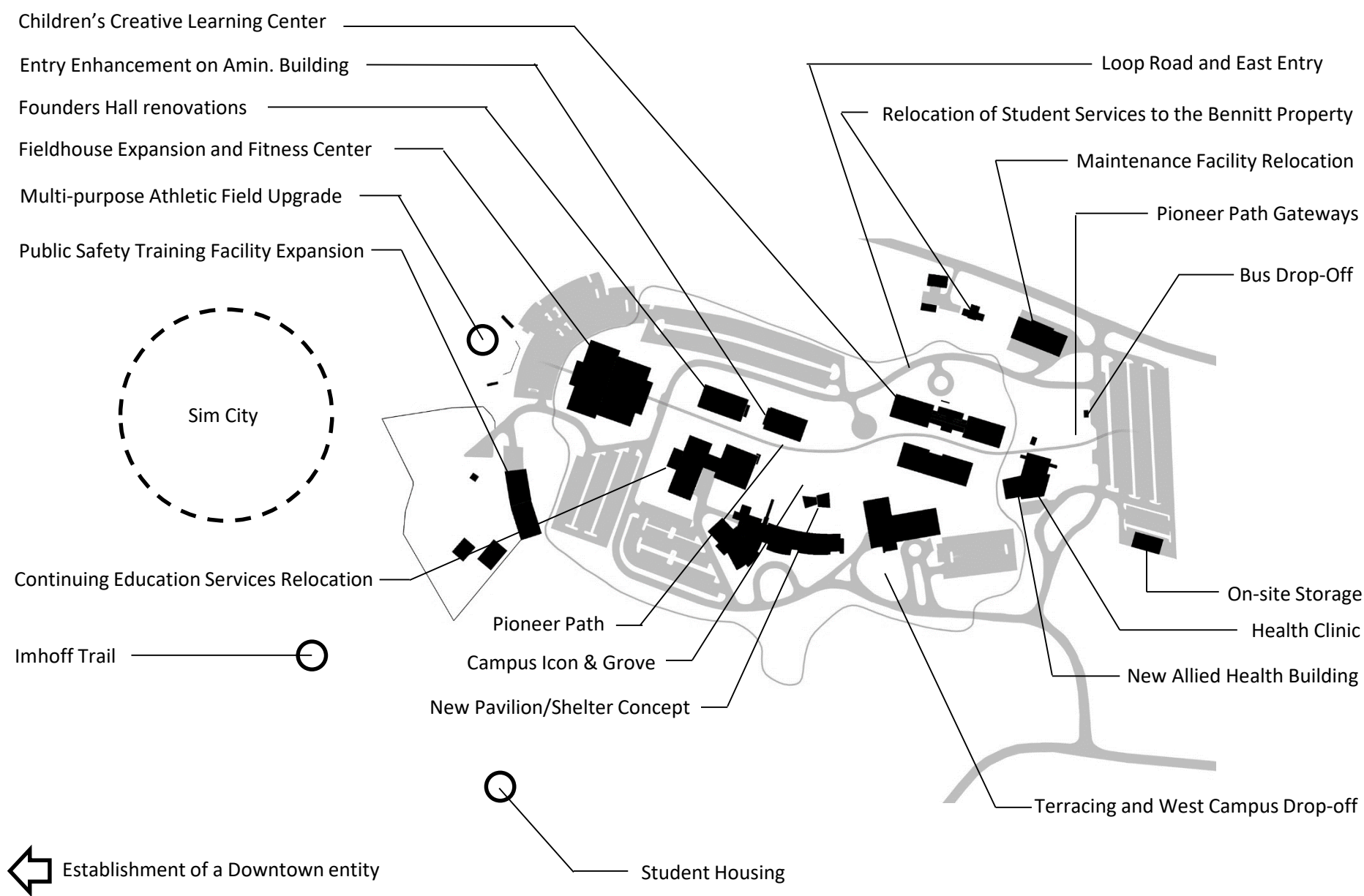
Sim
City



Master Plan Project List

- Children's Creative Learning Center
- Relocation of College Services to the Bennitt Property
- New Allied Health Building
- Maintenance Facility Relocation
- Loop Road and East Entrance
- Health Clinic
- Public Safety Training Facility Expansion
- Founders Hall renovations
- On-site Storage
- Continuing Education Services Relocation
- Establishment of a Downtown entity
- Sim City
- Pioneer Path Gateways
- New Pavilion/Shelter Concept
- Campus Icon & Grove
- Fieldhouse Expansion and Fitness Center
- Pioneer Path
- Imhoff Trail
- Terracing and West Campus Drop-off
- Multi-purpose Athletic Field Upgrade
- Student Housing







Sim
City



Master Plan Project List

- Children's Creative Learning Center
- Relocation of College Services to the Bennitt Property
- Renovate Location in Downtown Butler
- Maintenance Facility Relocation
- Loop Road and East Entrance
- Renovate Con-Ed Building
(Con-Ed relocates to downtown building)
- Renovate Administration Building
(Administration relocated to previous Con-Ed building)
- Renovate Allied Health Building
(Relocate Business to renovated Admin. building)
(HR relocates to Allied Health building)
- Health Clinic
- Public Safety Training Facility Expansion
- Founders Hall renovations
- On-site Storage
- Continuing Education Services Relocation
- Establishment of a Downtown entity
- Sim City
- Pioneer Path Gateways
- New Pavilion/Shelter Concept
- Campus Icon & Grove
- Fieldhouse Expansion and Fitness Center
- Pioneer Path
- Imhoff Trail



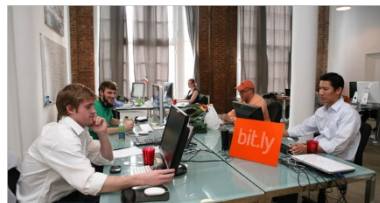
- Terracing and West Campus Drop-off
- Multi-purpose Athletic Field Upgrade
- Student Housing

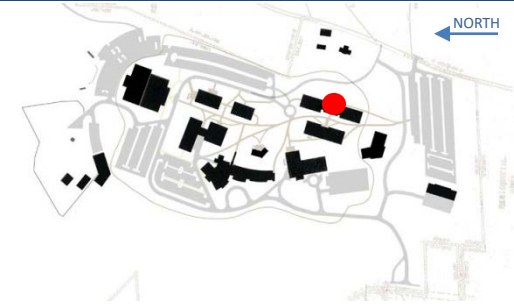




Establish a connection to Downtown Butler

- Establish programs in the downtown
- Hospitality Program

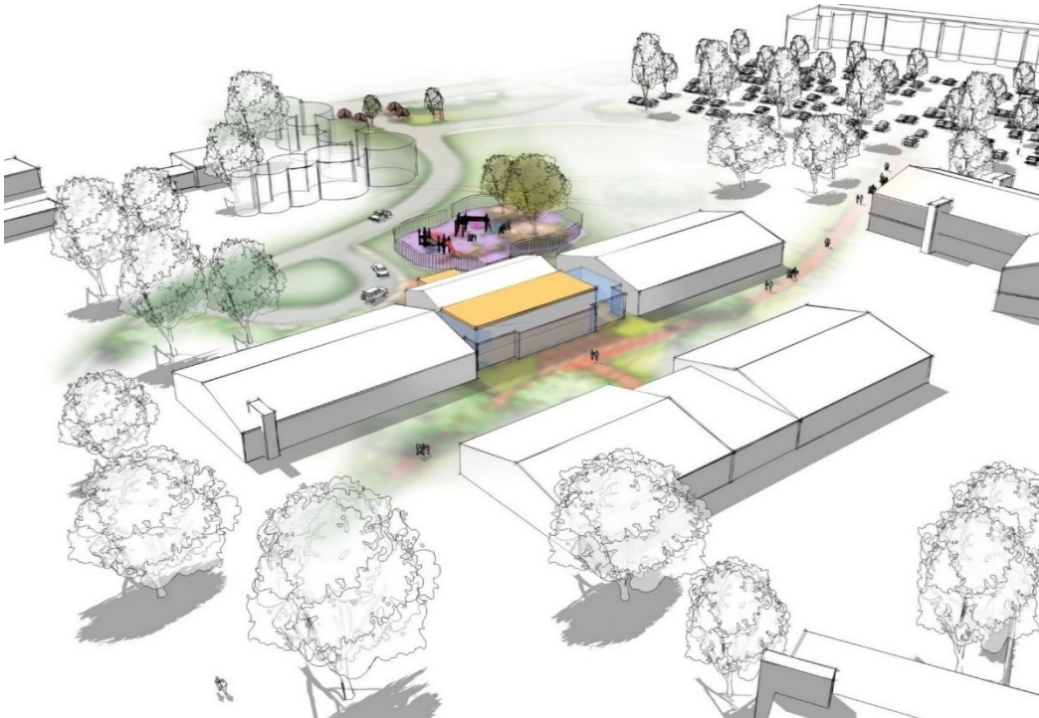


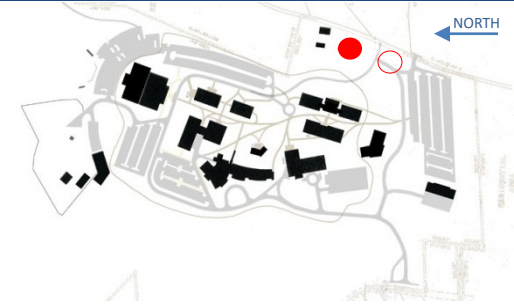


Children's Creative Learning Center

Enclosed connection and entry vestibule between the Arts & Hospitality and Social Science buildings also accessing the Children's Creative Learning Center. This connection will mirror the recently constructed Humanities & Education connection.

- New entry to the east side of the existing Children's Creative Learning Center accessed by a new drop-off loop and an addition to the west side of that space.
- Provides proper instructional space for children's learning programs
- This project will create a student sub-quad and outdoor interaction space along Pioneer Path in this area of the campus.



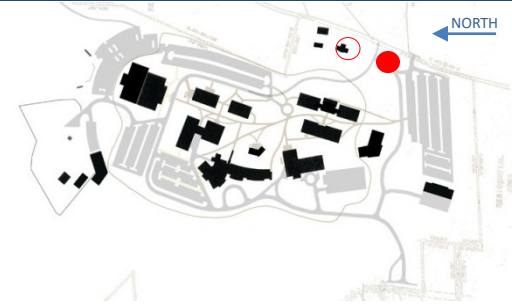


Bennitt House

Relocate College Services to the Bennitt House. This will complement Shipping & Receiving/maintenance relocation.

- College Services adjacent to shipping& receiving (soft connection between)
- Repurpose existing barns

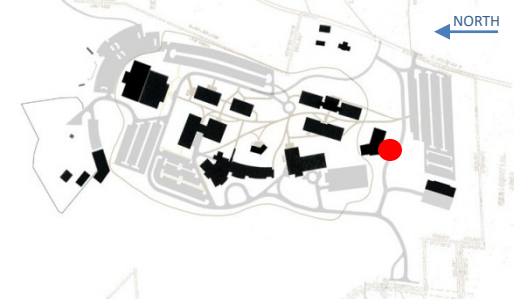
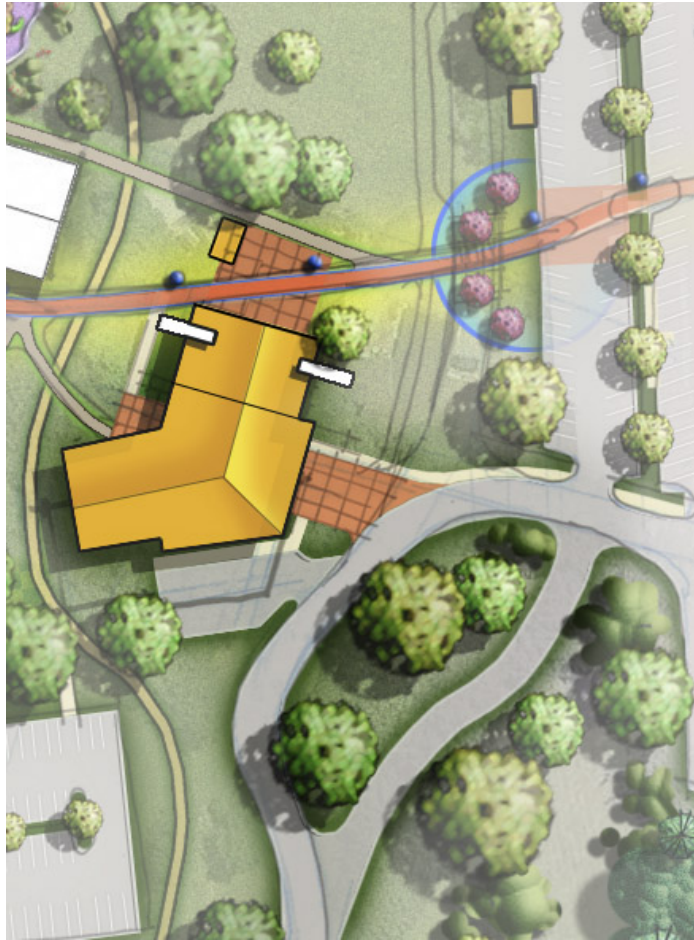




Maintenance/Shipping & Receiving

Build new facility to relocate maintenance and shipping & receiving operations to field between parking and Bennitt House with College Services relocated to the Bennitt House.

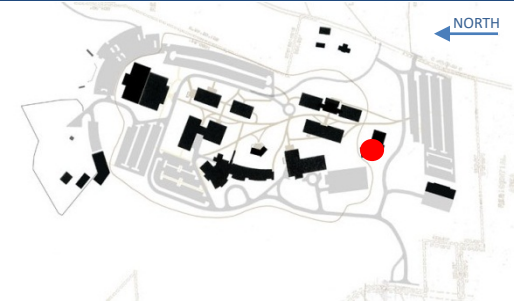
- College Services adjacent to shipping& receiving (soft connection between)
- Rework entry for trucks
- Staff parking to East
- Equipment parking to West
- Create loop road connection.



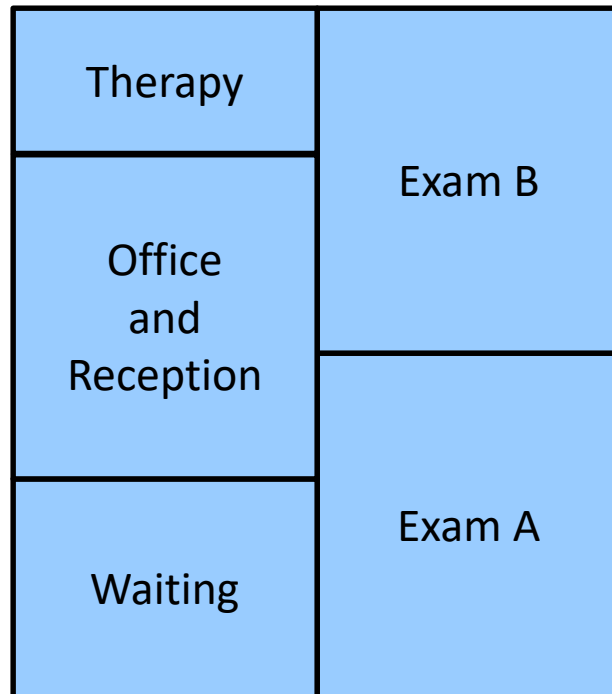
Allied Health Building

Construct new building to house the Allied Health Program, This building could also house the community clinic

- New building
- Partially two stories, located along Pioneer Path
- State of the art facility
- Potential medical center/E.R. simulated entry
- Opportunity to partner with local healthcare providers
- Reconfigure existing campus road to create drop-off



Community Clinic Space



1000 s.f.

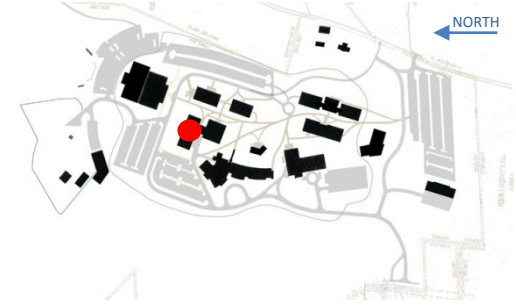
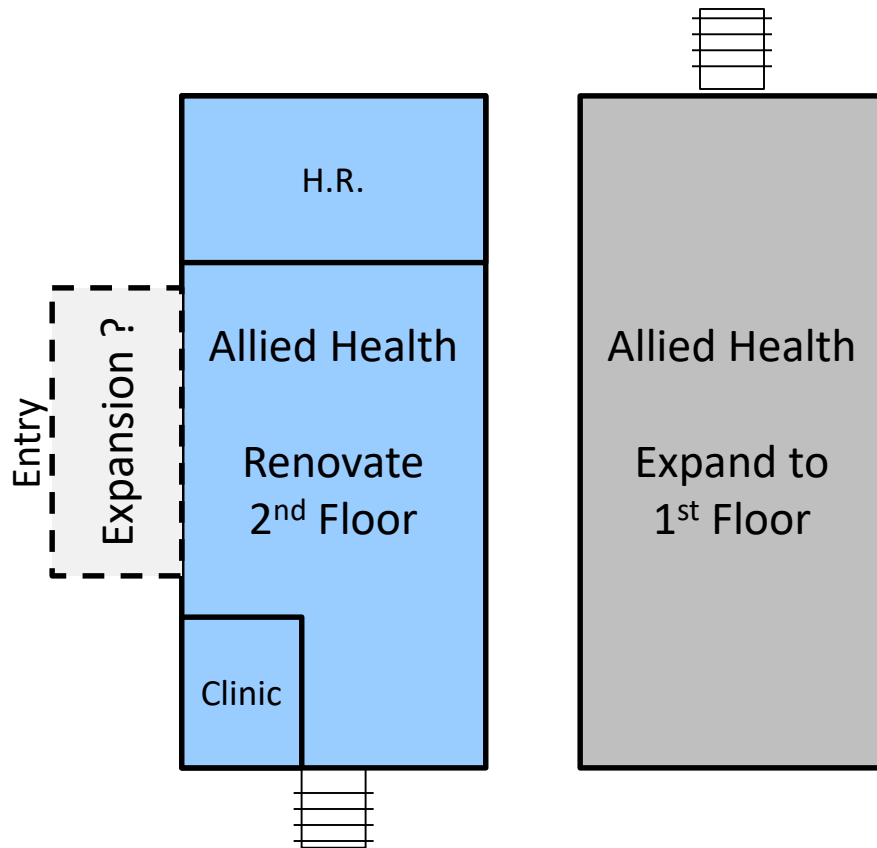
Community Clinic

Anticipated to be approximately a 900s.f. space.
Located adjacent to Allied Health/Nursing

- Offer medical care on campus.
- Use as training, experience, and possible employment for nursing program students.

Utilized by:

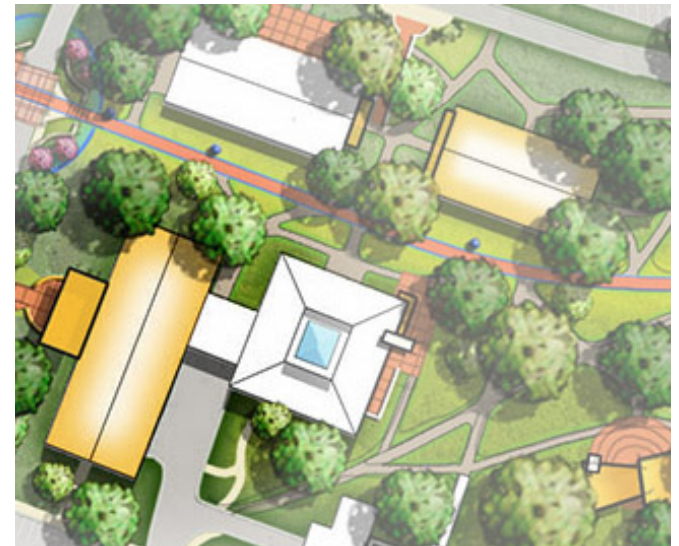
- Student
- Staff
- Community
- Sports programs
- Business

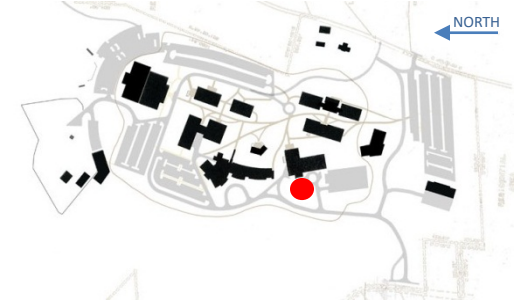
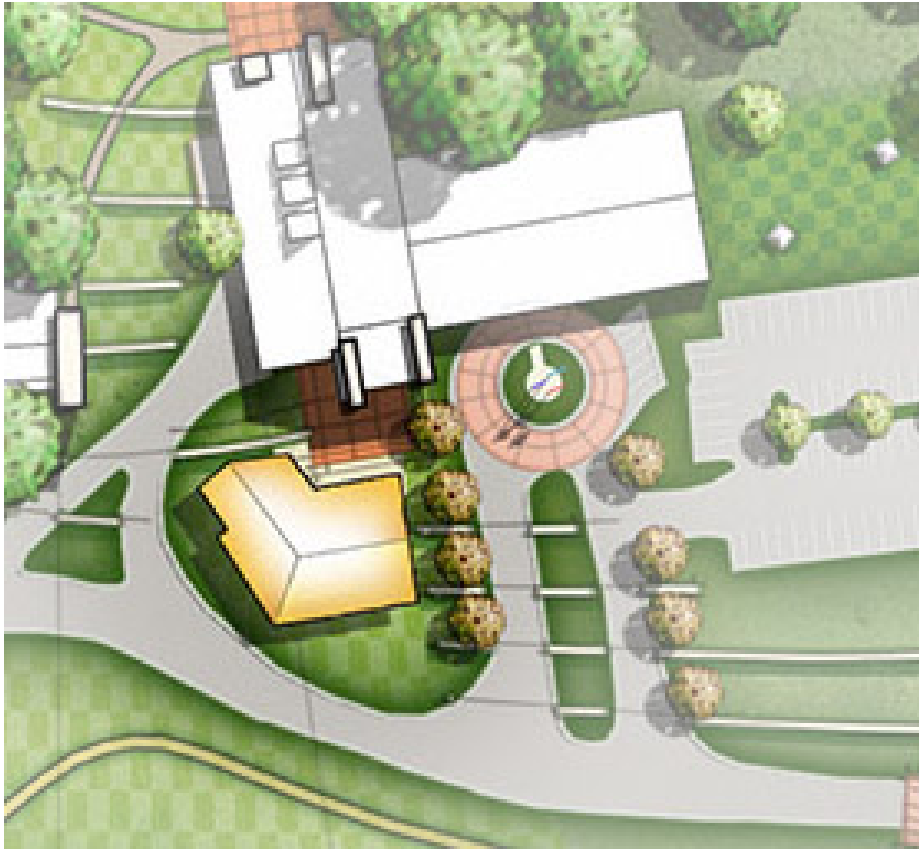


Allied Health

Expand Allied Health to utilize both floors of the building relocate Business Program to the current Admin. building

- Double +/- the s.f. of Allied Health/Nursing Program
- Relocate H.R. here (ties to Insur. & Medical)
- Locate Community Clinic here
- Potential for expansion and create Front door/entry to North parking



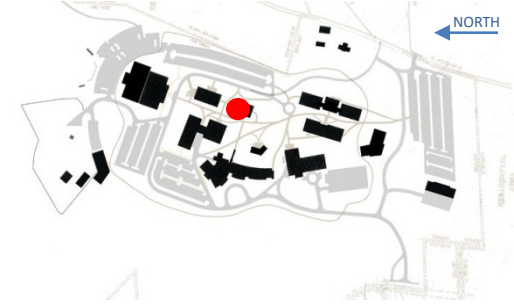
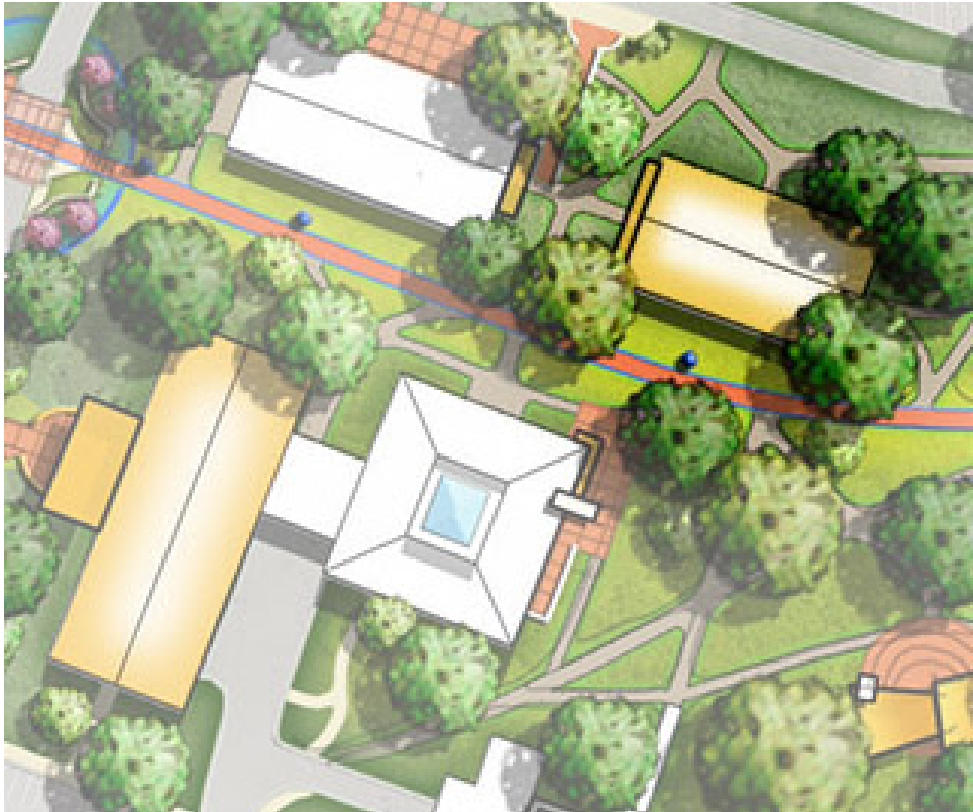


Con-Ed Building

Renovation of building and structure for repurposing as a location for Administration. Aesthetic design to complement the Student Success Center. Possible s.f. expansion needed.

Administration relocated located here

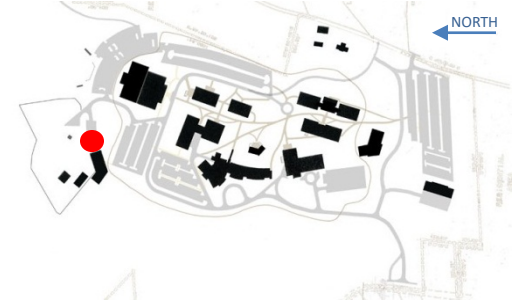
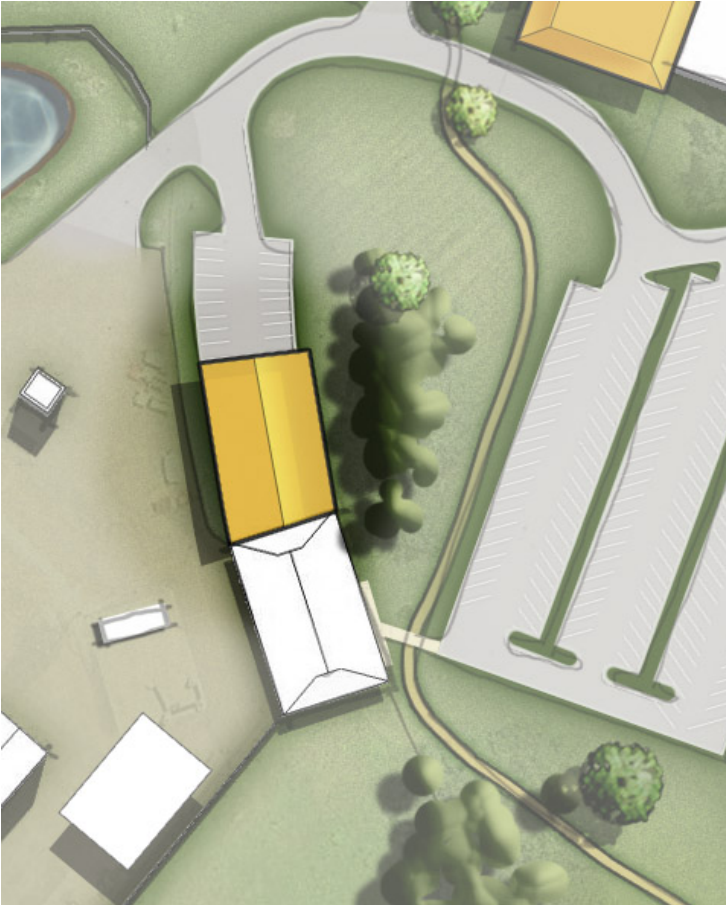
- President, V.P. of A.A., and V.P. of Finance Communications and Marketing, and foundation here
- Possible location for Alumni, Cultural Development, Welcome Center
- Creates single VIP face of campus/point of contact. Allows for presidents and administrative offices to be adjacent to Campus Police.
- Possible Foundation Location



AD Building

Relocate Business Program here

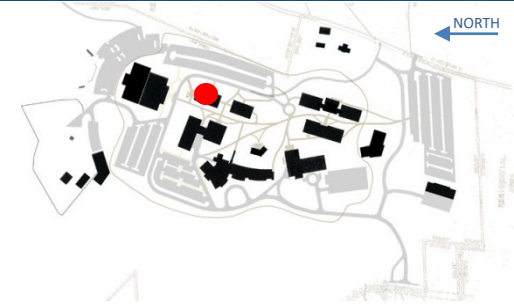
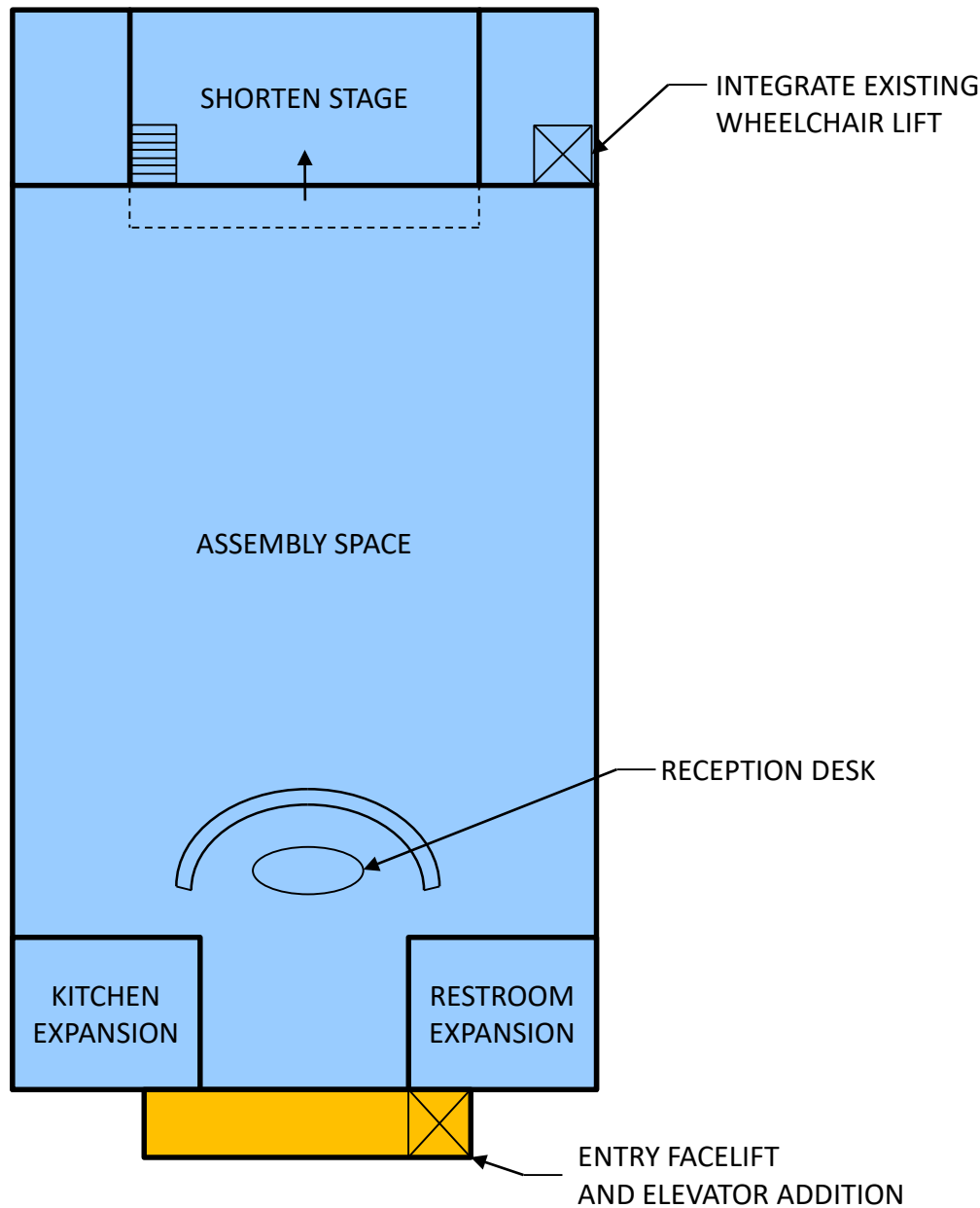
- Repurpose and renovate to house Business program
- Improve entry appeal, accessibility/stairs/ramps
- Add/expand restrooms
- Opens onto Grove
- Opens onto Heaton Learning Commons
- Address mechanical issues



Public Safety/Workforce Development Expansion

Expand Public Safety Building East and incorporate Workforce Development.

- 14k s.f. Addition (2 floors at 7k s.f.)
- Upper floor Workforce Development/training and classrooms.
- Lower floor to support EMS program and program equipment.



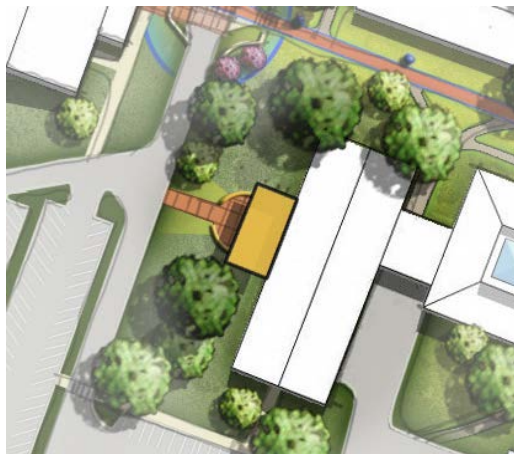
FOUNDERS HALL

Update Founders Hall – improve accessibility & utilization, and possible expansion

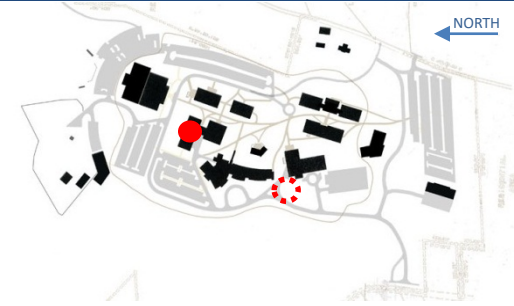
- Improve/Expand kitchen Amenities / food prep capabilities
- Install multiple dishwashers
- Upgrade the technology available in this location
- Improve accessibility - stairs/ramps/ add elevator
- Add/expand restrooms
- Improve entrance experience



Con-Ed removed and area terraced



Con-Ed relocation to BH Building



Con-Ed Relocation

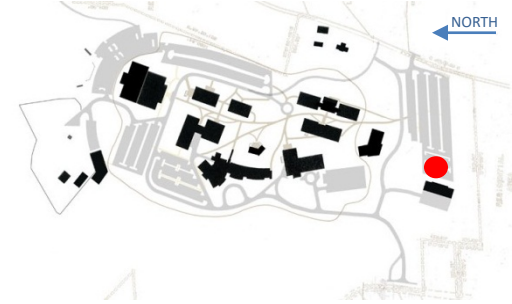
Remove existing Con-Ed building, Relocate the Con-Ed entity to the BH building, this program will utilize the space previously utilized by the Allied Health Program.

- Renovate the space previously utilized by the Allied Health Program to house Con-Ed
- Add interconnecting entry addition to the north side of the BH Building.
- Relocate the Con-Ed entity to the BH building
- Renaming building opportunity

Existing Con-Ed Building

- Remove the existing Con-Ed building
- Terrace/landscape the remaining site to showcase the Student Success Center entry.

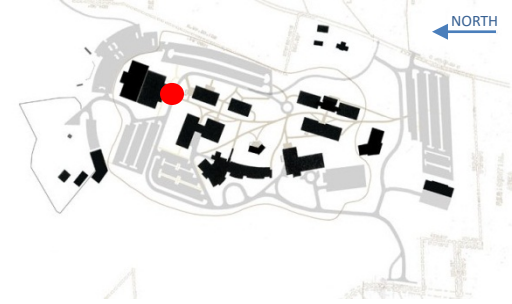
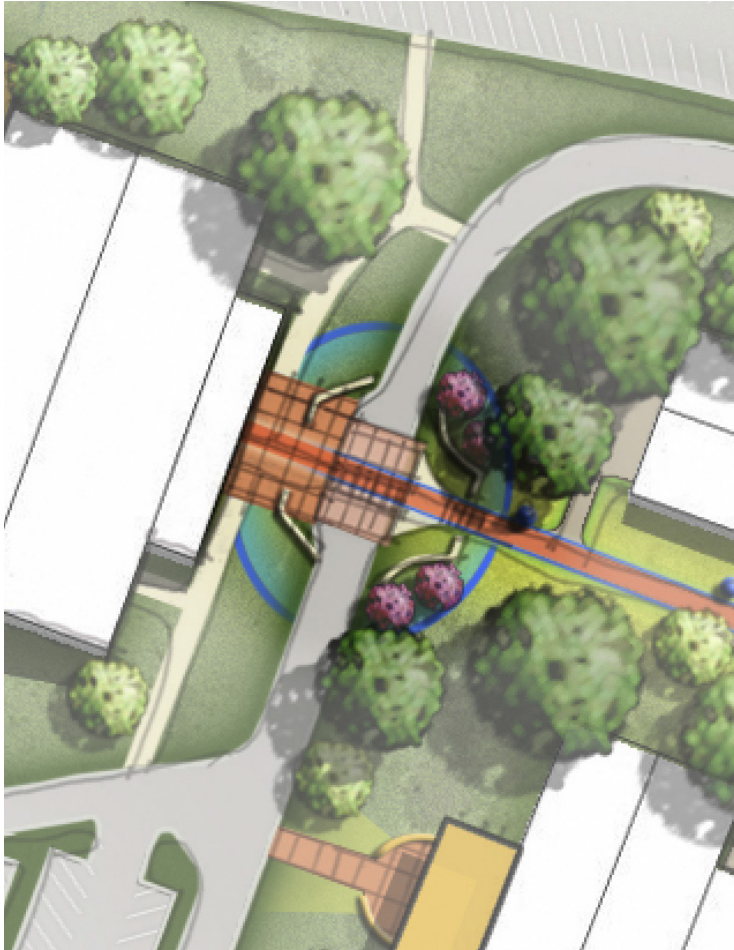




On-Site Storage

Build structure for on-site supply vehicle storage.

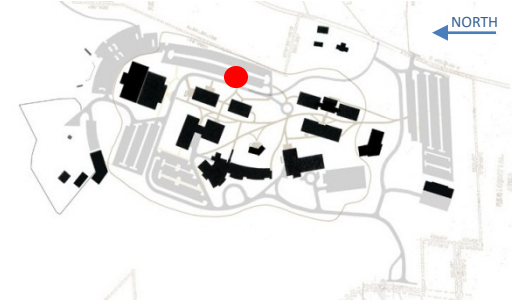
- Salt bin/snow-melt storage
- Covered storage for equipment



North Gateway

Reconfiguration – Create more formal arrival experience

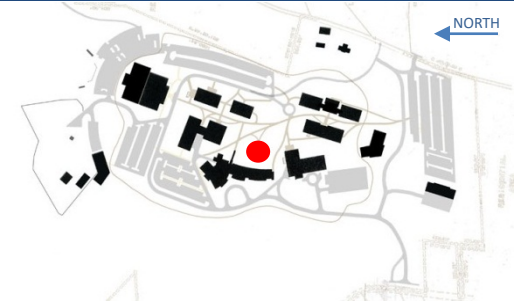
- Create event drop-off area and reinforce gateway for Commencement, Prom etc.
- Improve stairs to Campus and Fieldhouse
- Upgrade lighting and landscape
- Integrate a crosswalk
- Improve overall entrance experience



East Gateway

Reconfiguration – improve arrival experience

- Create a drop-off area for events at Founders Hall and reinforce this campus gateway
- Improve stairs and railings from parking lots
- Upgrade lighting and landscape
- Showcase Founders Hall and Learning Commons
- Improve overall entrance experience



Forum Rebirth

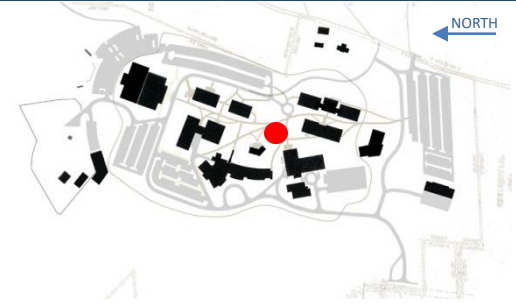
Multi-use structure (three season space) located within the heart of the BC3 campus constructed where the forum is currently allowing opportunity for student as well as public use. The design can potentially incorporate a public address system, cooking/grilling equipment, and an outdoor fireplace. Forum rebirth designed to recognize and pay homage to the old Forum. Pavilion design with a timber-frame aesthetic



- Utilized for 3 seasons
- Fireplace
- Location for campus icon/clock tower/chime
- Support and enhance student life
- Available for community events/ presentations
- A/V capabilities for presentation
- Wash sink/prep area
- Repurposes the currently under-utilized forum
- Provides opportunity for outdoor instructional sessions, large-group presentation, and public events space
- Potential usage as picnic shelter/ recreational venue



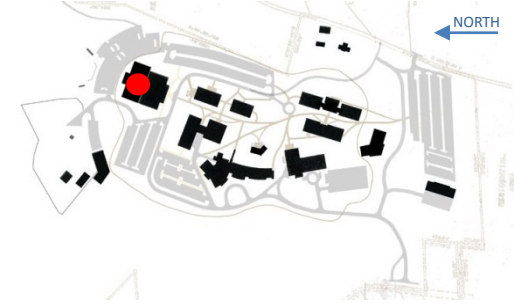
Design Benchmarking – Iconic design and materials



CAMPUS ICON

A designed visual sculptural and iconic marker located along Pioneer Path

- Integrate into grove setting
- Reinforces campus identity
- Identifier helps to encourage student engagement in the Butler County Community College experience

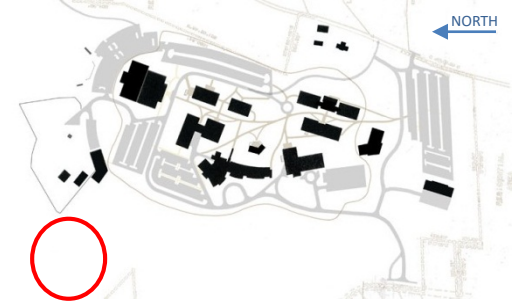
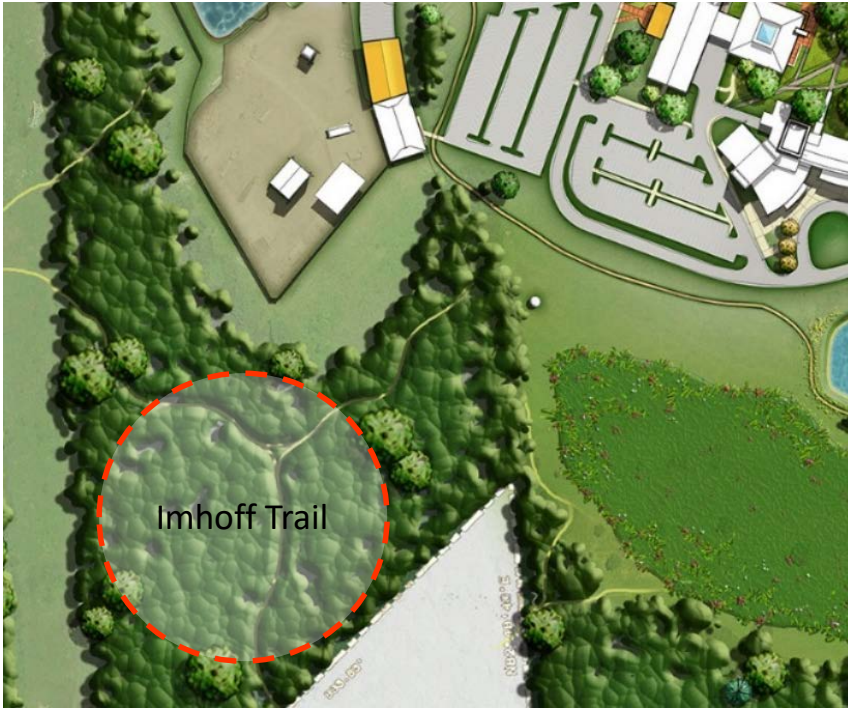


Field House

The entry experience needs addressed in the short-term

Field House expansion and fitness center for the Long-term. Expand the building to the North to include a 2-story addition. Thinking at this time is that this addition would be part of steps taken with the integration of on-site housing.

- 2-story addition will accommodate Lifelong Learning Physical Fitness programs. A fitness center on the ground level with a running track above.
- Vestibule/lobby off of the North parking lot
- Integration of the Shaffer Walking Trail Head

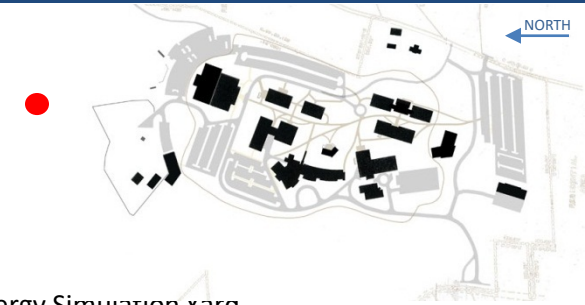


Imhoff Trail

A wooded walking trail, located at the North end of BC3's main campus

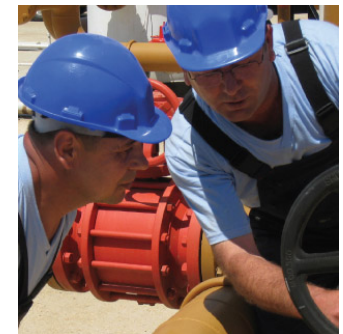
- Offers a link to educational/nature study opportunities

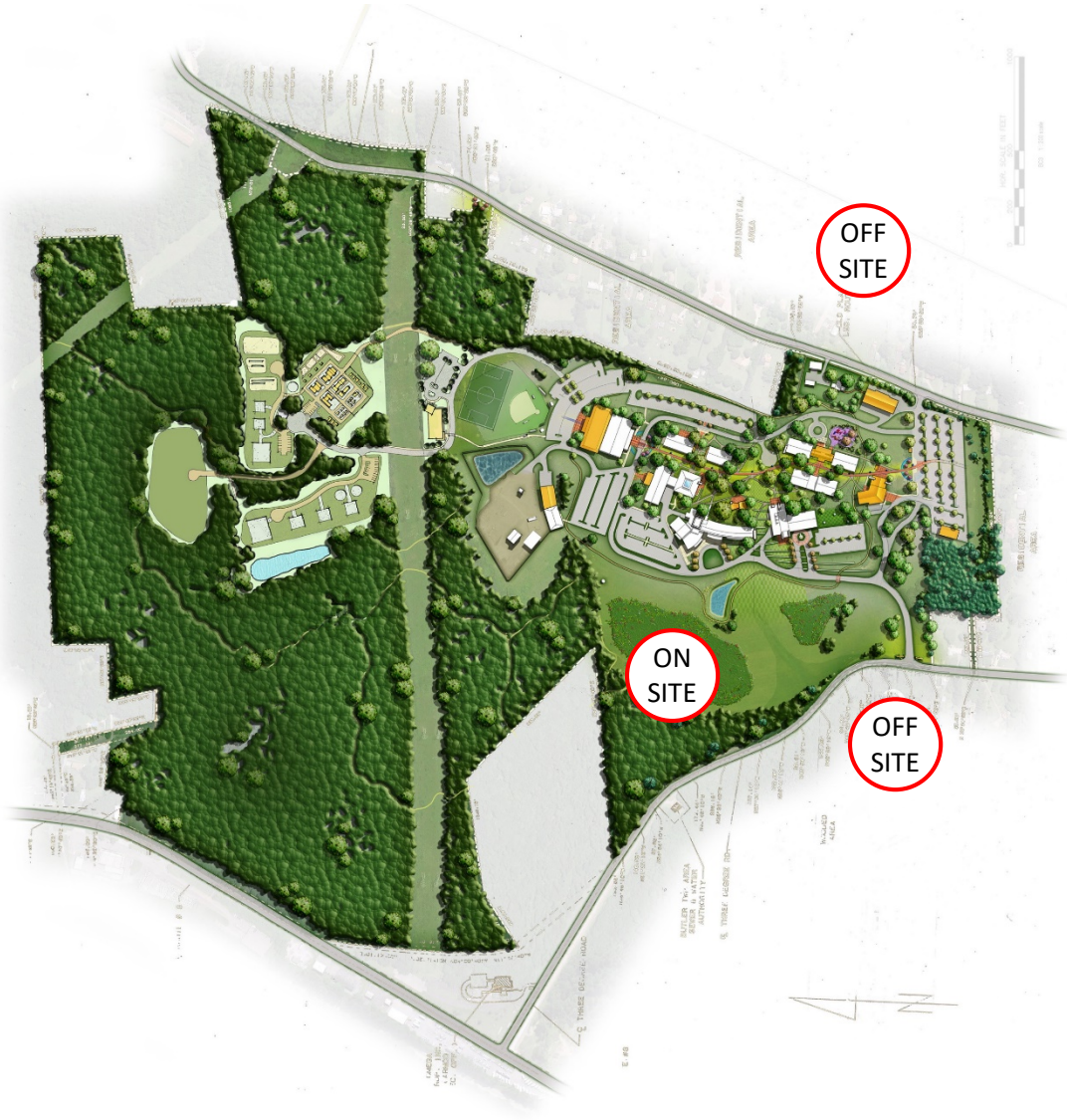




Energy Simulation yard
Multiple uses and opportunities
Grant and funding dependent

- Gas, Oil, Electric, and other industry training





Student Housing

BC3 will plan for future on-site and/or off-site housing. An early study showed a use for 180 beds.

On-site housing will impact :

- Fieldhouse/gym/fitness center requirements
- Theatre usage
- Library usage
- Campus Police
- Clinic (health & wellness center)
- Food service
- Walking trail





South Campus Project

- Maintenance Facility Relocation
- New Allied Health Building
- Health Clinic
- Loop Road
- Old Plank Road Campus Entrance
- South Pioneer Path Gateway

Backfill

- Nursing area renovation (Con-Ed)
- Con-Ed repurpose/demolition



MOORE DESIGN
associates

www.mooredesignassociates.com

130 Heaven Lane | Mars, PA 16046 | 724.898.2082